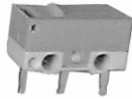


SWITCHES SNAP ACTION

SPECIFICATIONS:

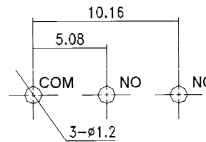
Current Rating:	3A @ 125V AC, 1A @ 250V AC						
Insulation Resistance:	100 Meg ohm (Min.) @ 500V DC						
Dielectric Strength:	1Ac 500V 50/60 Hz for 1 minute						
Contact Resistance:	50 Meg Ohm						
Electrical Life:	30,000 Cycles						
Operating Temperature Range:	-25°C - +85°C						
Part No.	OF max	RF min	PT max	OT min	MD max	OP	Actuator
30-2400	150g	20g	0.5 mm	0.25 mm	0.12 mm	5.5 + 1.5 mm	Pin Plunger
30-2401	80g	5g	0.55 mm	0.55 mm	0.5 mm	6.8 ± 1.5 mm	Short Lever



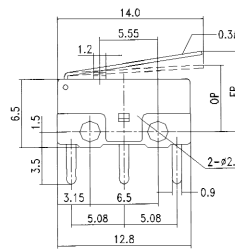
30-2400



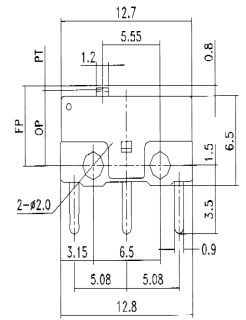
30-2401



MICRO SNAP ACTION SWITCHES



30-2401



30-2400

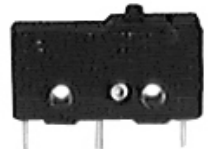
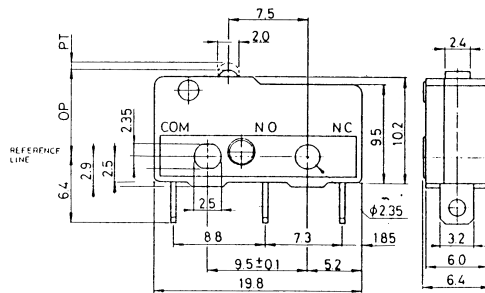
SPECIFICATIONS:

Current Rating:	5A @ 125V AC, 3A @ 250V AC		
Initial Contact Resistance:	15 Meg ohm (Max.)		
Insulation Resistance:	500V DC 1000 Meg ohm (Min.)		
Dielectric Strength:	1000V AC for 1 Minute		
Contact Material:	Silver		
Terminal Material:	Brass - Silver Plate		
Terminal Type:	Solder		
Part No.	Type	Action	Actuator
30-2500	SPDT	Snap Action Momentary	Pin Plunger

SPECIFICATIONS:

Terminal: Solder	OT Min.: 0.6mm
OF Max.: 150g	MD Max.: 0.2mm
RF Min.: 55g	FP Max.: 9.2mm
PT Max.: 0.6mm	OP: 8.4 ± 0.5mm

SUB-MINIATURE SNAP ACTION SWITCH with PIN PLUNGER



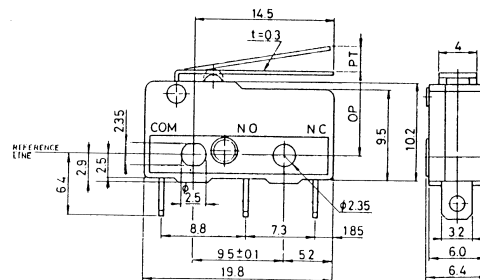
SPECIFICATIONS:

Current Rating:	5A @ 125V AC, 3A @ 250V AC		
Initial Contact Resistance:	15 Meg ohm (Max.)		
Insulation Resistance:	500V DC 1000 Meg ohm (Min.)		
Dielectric Strength:	1000V AC for 1 Minute		
Contact Material:	Silver		
Terminal Material:	Brass - Silver Plate		
Terminal Type:	Solder		
Part No.	Type	Action	Actuator
30-2501	SPDT	Snap Action Momentary	Short Lever

SPECIFICATIONS:

Terminal: Solder	OT Min.: 1.4mm
OF Max.: 45g	MD Max.: 0.8mm
RF Min.: 12g	FP Max.: 11.9mm
PT Max.: 2.8mm	OP: 8.8 ± 0.8mm

SUB-MINIATURE SNAP ACTION SWITCH with SHORT LEVER



SUB - MINIATURE SNAP ACTION SWITCH WITH SIMULATED ROLLER

SPECIFICATIONS:

Current Rating:	5A @ 125V AC, 3A @ 250V AC						
Insulation Resistance:	100 Meg ohm (Min.) @ 500V DC						
Dielectric Strength:	AC 500V (50/60Hz for 1 minute)						
Contact Resistance:	30 Meg Ohm max						
Electrical Life:	100,000 Cycles						
Operating Temperature Range:	-25°C - +85°C						
Part No.	OF max	RF min	PT max	OT min	MD max	FP max	OP
30-2503	45 g	12 g	3.0 mm	1.4 mm	0.8 mm	14.0 mm	10.7 ± 0.8 mm

